

SCHLOSS ELMAU  
LUXURY SPA & CULTURAL HIDEAWAY  
★ ★ ★ ★ ★

**The Schloss Elmau Experience  
Price List 2012**



THE LEADING HOTELS  
OF THE WORLD®



LEADING  
SPAS

## THE SCHLOSS ELMAU ROOM RATES

### per night and person 16 years and older include:

- overnight accommodations
- use of all spas with bathrobe and bath slippers\*
- admission to all concerts and literary events
- VAT

\* Please note that the Badehaus and the Oriental Hamam are reserved exclusively for adults 16 and over.

## THE SCHLOSS ELMAU HALF-BOARD & MORE

### In addition to the hotel room rate, a local visitor's tax of € 0.60 and the Schloss Elmau Half Board & More Package of € 88/person/night will be charged. This includes:

- Breakfast at the La Salle or Ananda restaurant
- Dine around dinner credit for up to € 45
- Mineral water and apples in your room upon arrival
- Cake of the day, fruit and midnight snack in the Teesaal lounge
- Tea, apples, dried fruit and nuts in the spa lounges
- 24-hour Wireless Lan Internet access in all rooms
- Participation in the free weekly Fit & Active Program
- Participation in the sports and Outdoor & Action Programs if they don't charge an additional fee
- Use of both ice rinks next to the Schloss
- Use of the Schloss' own cross-country trails (20 km)
- Transfer to the regions's best cross-country trails (70 km+)
- Shuttle to ski instruction at "Skiparadies Luttensee"
- Rental of sleds, ice skates or mountain bikes (spring to autumn)
- VAT

Please note that the Half Board & More Package charges are not reimbursable, regardless of whether none or only some of these benefits have been utilized.

## RATE REDUCTIONS FOR CHILDREN UP TO 15 IN THEIR PARENTS' ROOM

### Included in the room rate:

- overnight accommodations on the couch or children's bed
- use of the Family Spa and/or Nature Spa
- admission to all concerts and literary events for children that can sit still for the length of the presentation

### In addition to the room rate, the Schloss Elmau Full Board & More Package will be charged per child/night:

€ 30 for children up to 2 years

€ 45 for children from 3 to 5 years

€ 60 for children from 6 to 10 years

€ 75 and visitor's tax of € 0,45 for teens from 11 to 15 years

The Schloss Elmau Full Board & More Package for children includes:

- Breakfast buffet for families, lunch buffet from 12:30 to 1:30 pm for children and teens and dinner buffet or kid's menu from 6 to 7 pm for families
- Cake of the day and fruit in the Teesaal lounge
- Tea, fruit and nuts in the Family Spa
- Participation in Edutainment, Adventure and Outdoor & Action programs if they don't charge an additional fee
- Kindergarten care for children from 1 to 5 years that can be separated from their parents
- VAT

Please note that the Full-Board & More Package charges are not reimbursable, regardless of whether none or only some of these benefits have been utilized.

## DISCOUNTS

- **For families:** reduction of the room rate equal to the Schloss Elmau Full Board & More Package for children up to 2 years in Periods B to D and children from 3 to 5 years in the Periods C and D as noted in the price calendar.
- **Long Stays:** if you book at least 7 nights, room rates will be reduced by € 20/night per person over 16 years.
- **Short Weeks:** if you book a short week for 5 nights and arrival and specified Sundays, you will receive a reduction of € 75/night per person over 16 years. The respective dates can be found under Specials on the Schloss Elmau website.
- **Attractive Packages for Spa & More** can be found on [www.schloss-elmau.de](http://www.schloss-elmau.de).

### During the respective periods marked in the rate calendar the following surcharges are added to the room rate:

Period	Surcharge
C	€ 25
B	€ 40
A	€ 55, for children 3 years and up € 25
X	€ 145, for children 3 years and up € 65

On weekends, an additional charge of € 25 per night and person over 6 years will be charged if the stay is less than 3 days.

On December 31, an additional New Year's Eve fee of € 275 per person and € 120 per child over 11 years will be charged.

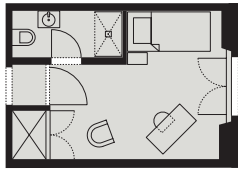
## PLEASE NOTE

- Check In after 4:30 pm; Check Out 11:30 am.
- Smoking is absolutely forbidden in all guest and public rooms.
- Reservations are for room categories and not specific rooms or floors.
- Cancellation or a reduction of the length of a stay less than 4 weeks before the planned arrival date will result in a cancellation fee equal to the room rate for the cancelled or reduced number of days unless we are able to book the room for someone else on the same day.
- No refunds can be made for not using some or all of the offerings included in the Schloss Elmau Package.
- No pets are allowed in the hotel or any of its restaurants or spas.
- The underground parking fee is €10 per car and day.
- In suites, the 3<sup>rd</sup> and 4<sup>th</sup> person 16 years and over will be charged a €110 fee plus the € 88 per person/night Schloss Elmau Package fee.
- The hotel reserves the right to adjust all rates quoted or confirmed in the event of a VAT increase.

Published October 2011.

Subject to change.

**SINGLE ROOMS IN THE SCHLOSS**



**Single Room Puristic**

East view historical, 18 – 20 m<sup>2</sup>, Loewe TV, Bose sound system with iPod stinch cable, minibar. Bathroom with shower.

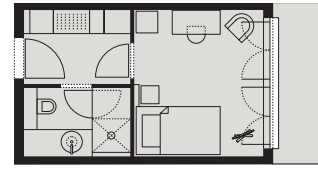
**from € 105**



**Single Room Puristic with Balcony**

East view historical, 18 – 20 m<sup>2</sup>, Loewe TV, Bose sound system with iPod stinch cable, minibar. Bathroom with shower.

**from € 154**



**Single Room Deluxe with Balcony**

South view, 22 m<sup>2</sup>, French bed (140 x 210 cm) with Schramm mattress, Loewe TV, Bose sound system with iPod stinch cable, minibar. Bathroom with shower.

**from € 196**

**LARGE SINGLE ROOMS IN THE SCHLOSS**



**Large Single Room Deluxe**

South view, 25 m<sup>2</sup>, French bed (160 x 210 cm) with Schramm mattress, Loewe TV, Bose sound system with iPod stinch cable, minibar. Bathroom with shower.

Single Occupancy **from € 206**

Double Occupancy **from € 110**



**Large Single Room Deluxe with Balcony**

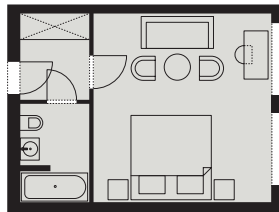
South view, 25 m<sup>2</sup>, French bed (160 x 210 cm) with Schramm mattress, Loewe TV, Bose sound system with iPod stinch cable, minibar. Bathroom with shower.

Single Occupancy **from € 236**

Double Occupancy **from € 125**

**DOUBLE ROOMS IN THE SCHLOSS**

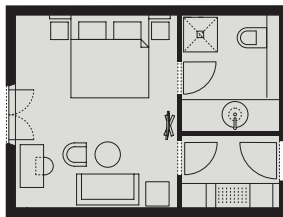
For 2 occupants



**Double Room Puristic**

East view historical, 26–31 m<sup>2</sup>, bed (180 x 200 cm), Loewe TV, Bose sound system with iPod stinch cable, minibar. Bathroom with bathtub.

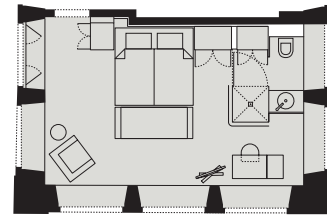
**from € 105**



**Double Room Deluxe**

South view, 33 m<sup>2</sup>, bed (200 x 210 cm) with Schramm mattress, Loewe TV, Bose sound system with iPod stinch cable, minibar. Luxurious natural stone bathroom with shower.

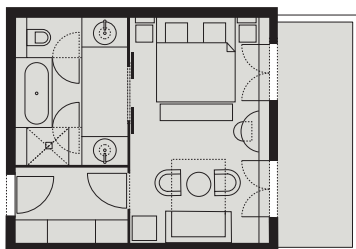
**from € 156**



**Double Room Tower**

South, west and east views, 30 m<sup>2</sup>, bed (180 x 200 cm) with Schramm mattress, Loewe TV, Bose sound system with iPod stinch cable, minibar. Bathroom with shower (separated from the room only by a glass divider). Tower does not have elevator access or Room Service.

**from € 166**

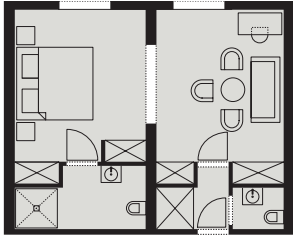


**Double Room Deluxe with Balcony or Terrace**

West view, 39 m<sup>2</sup>, bed (200 x 210 cm) with Schramm mattress, Loewe TV, Bose sound system with iPod stinch cable, minibar. Luxurious natural stone bathroom with shower, bathtub and separate toilet.

**from € 176**

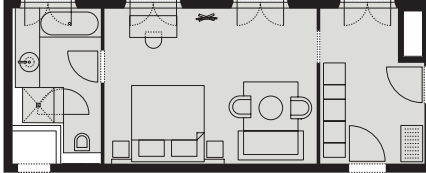
**JUNIOR SUITES WITH LIVING ROOM AREA AND BEDROOM IN THE SCHLOSS**



**Junior Suite Puristic**

East historical view, 40 – 50 m<sup>2</sup>, bed (180 x 200 cm), living room area with sofa-bed. Loewe TV, Bose sound system with iPod stinch cable, minibar. Bathroom with shower and some suites with additional, separate toilet.

**from € 144**



**Junior Suite Courtyard**

45 m<sup>2</sup>, bedroom with oversized bed (200 x 210 cm) and Schramm mattress and a sofa-bed. Loewe TV, Bose sound system with iPod stinch cable, minibar. Luxurious natural stone bathroom with bathtub, shower and view of the courtyard.

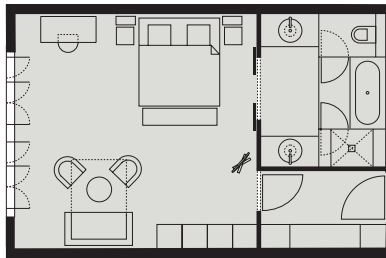
**from € 160**

**All Deluxe Junior Suites** in the Schloss have oversized beds (200 x 210 cm) with Schramm mattresses, living room areas with a sofa-bed. Loewe TVs, Bose sound systems with iPod stinch cable, minibars. Luxurious natural stone bathrooms with bathtub, shower, separate toilet and view of the mountains.



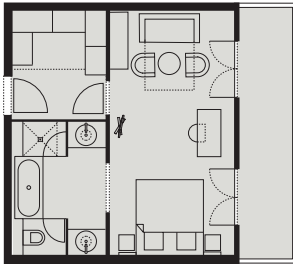
**Junior Suite Deluxe**

South or west view, 40 – 44 m<sup>2</sup>  
**from € 188**



**Junior Suite Deluxe XL**

South or west view, 45 – 55 m<sup>2</sup>  
**from € 198**

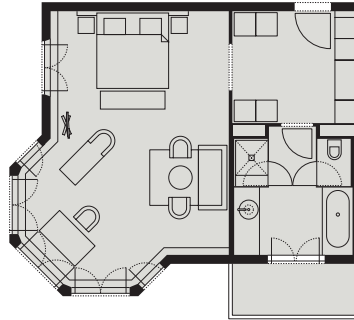


**Junior Suite Deluxe XL with Balcony**

South or west view, 40 m<sup>2</sup>  
**from € 218**

**Junior Suite Deluxe XXL with Balcony**

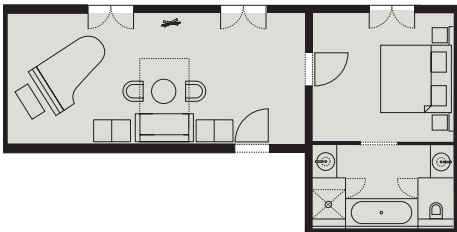
South or west view, 45 m<sup>2</sup>  
**from € 228**



**Prince's Deluxe Suite with Balcony**

South or west view, 65 m<sup>2</sup>  
**from € 295**

**SUITES WITH SEPARATE LIVING ROOM AND BEDROOM IN THE SCHLOSS**



**Piano Suite Deluxe**

North view, 65 m<sup>2</sup>. Bedroom with oversized bed (200 x 210 cm) and Schramm mattress. Living room with sofa-bed and Kawai piano. Loewe TV, Bose sound system with iPod stinch cable, minibar. Luxurious natural stone bathroom with bathtub, shower, separate toilet and view of the valley.

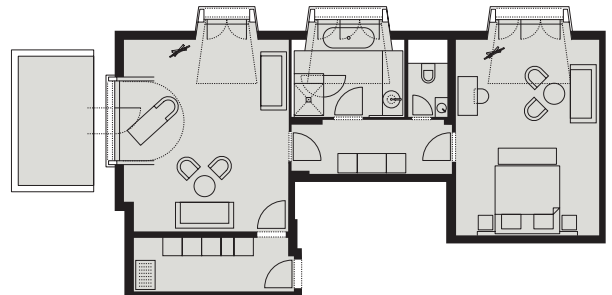
**from € 236**



**Sous le Toit Suite Deluxe**

South view, 70 m<sup>2</sup>. Bedroom with oversized bed (200 x 210 cm) and Schramm mattress. Living room with couch, sofa-bed and chaise longue. Loewe TV, Bose sound system with iPod stinch cable, minibar. Luxurious natural stone bathroom with bathtub, shower, separate toilet and view of the mountains.

**from € 315**

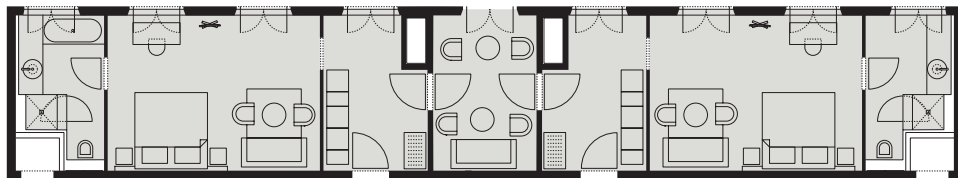


**Windows on the Mountain Suite Deluxe with Balcony**

South and west view, 85 m<sup>2</sup>. Bedroom with oversized bed (200 x 210 cm) and Schramm mattress. Living room with couch, sofa-bed and chaise longue. Loewe TV, Bose sound system with iPod stinch cable, minibar. Luxurious natural stone bathroom with bathtub, shower, view of the mountains and separate toilet.

**from € 395**

**FAMILY SUITES WITH 2 BEDROOMS IN THE SCHLOSS**



**Family Twin Suite Deluxe**

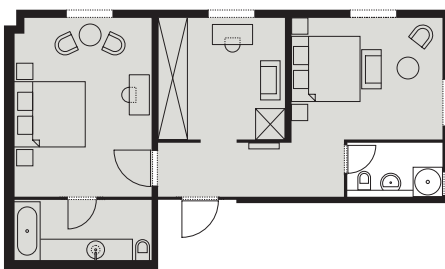
Courtyard view, 105 m<sup>2</sup>. 2 Junior suites with a small living room as a connecting room. 2 bedrooms with oversized beds (200 x 210 cm) and Schramm mattresses and 2 sofas. Loewe TV, Bose sound system with iPod stinch cable, minibar. 2 luxurious natural stone bathrooms with view of the courtyard, one with a bathtub and shower, the other only with shower.

**from € 285**

**Family Suite**

East and north view, 65 m<sup>2</sup>. 2 bedrooms, beds (180 x 200 cm) with Schramm mattresses and a sofa. Loewe TV, Bose sound system with iPod stinch cable, minibar. Large dressing room with walk-in closet. Luxurious natural stone bathroom with bathtub and daylight. Additional small natural stone bathroom with shower but without daylight.

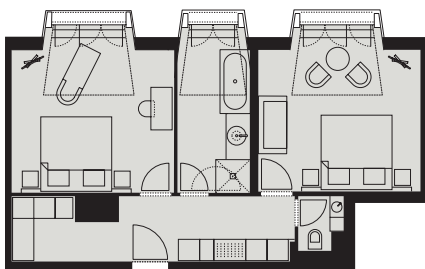
**from € 250**



**Family Suite Deluxe**

North, east or west view, 65 m<sup>2</sup>. 2 bedrooms with oversized beds (200 x 210 cm) and Schramm mattresses. Living room with sofa. Loewe TV, Bose sound system with iPod stinch cable, minibar. Luxurious natural stone bathroom with bathtub and daylight. Small additional bathroom with shower.

**from € 285**



**Près du Ciel Family Suite Deluxe**

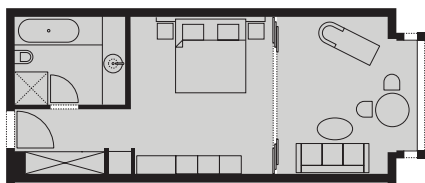
South or west view, 65 m<sup>2</sup>. 2 bedrooms with oversized beds (200 x 210 cm) and Schramm mattresses. One room with a sofa, one room with a chaise longue. Loewe TV, Bose sound system with iPod stinch cable, minibar. Luxurious natural stone bathroom with bathtub, shower, view of the mountains and, in some suites, a separate toilet.

**from € 295**

**JUNIOR SUITES – SOME WITH DIVIDERS BETWEEN BEDROOM AND LIVING ROOM – IN THE WETTERSTEIN WING**



**Junior Suite Wetterstein Puristic** South view, 45–55 m<sup>2</sup>, bed (180 x 200 cm), winter garden living room with sofa and dining table. Kitchenette with minibar. Loewe TV, DVD player. Small bathroom with shower and toilet **from € 160** bathtub, shower and toilet **from € 180**

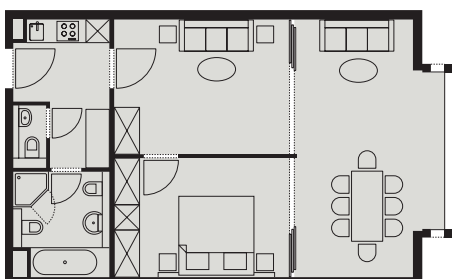


**Junior Suite Wetterstein Deluxe**

South view, 45 m<sup>2</sup>, oversized bed (200 x 210 cm) with Schramm mattress, winter garden living room with sofa and chaise longue. Loewe TV, Bose sound system with iPod stinch cable, minibar. Luxurious natural stone bathroom with bathtub, shower and view of the mountains.

**from € 210**

**SUITES WITH DIVIDERS BETWEEN BEDROOM AND LIVING ROOM IN THE WETTERSTEIN WING**

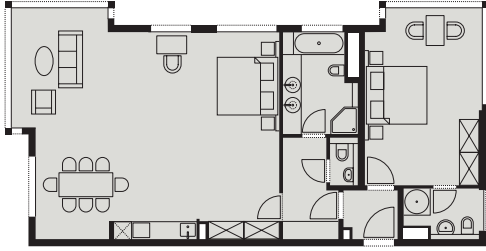


**Wetterstein Suite Puristic**

South view, 67 m<sup>2</sup>. Small, divisible bedroom (bed 200 x 180 cm). Large winter garden living room with 2 sofas and dining table. Loewe TV, DVD player. Kitchenette with minibar. Small bathroom with bathtub, shower and second separate toilet.

**from € 250**

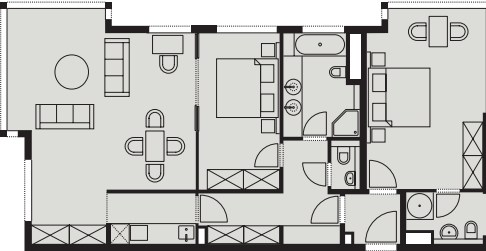
**FAMILY SUITES WITH 2 BEDROOMS AND 2 BATHROOMS IN THE WETTERSTEIN WING**



**Giardino Suite Puristic**

South, west and north view, 110 m<sup>2</sup>, ground floor with access to the outdoors. 2 rooms, one of which is a large living room/bedroom (bed 200 x 180 cm) with kitchen, minibar and sofa-bed. Loewe TV, DVD player. Bathroom with shower, view of the mountains and second separate toilet. The second room is a double room (bed 200 x 180 cm) with shower, toilet and view of the valley.

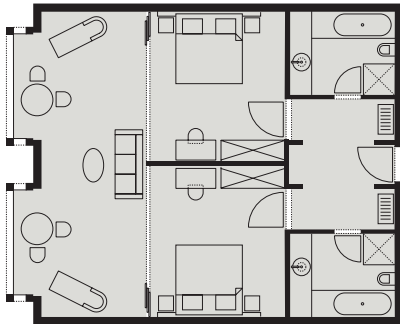
**from € 330**



**Wettersteinspitze Apartment Puristic**

South, west and north view, 110 m<sup>2</sup>, 1<sup>st</sup> floor. 2 rooms, one large room with a small, divisible bedroom (bed 200 x 180 cm) and a large winter garden living room, 2 sofa-beds, dining table and kitchenette with minibar. Loewe TV, DVD player. Bathroom with bathtub, shower, view of the mountains and second separate toilet. The second room is a small double room (bed 200 x 180 cm) with shower, toilet and view of the valley.

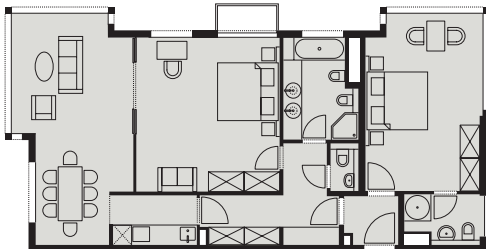
**from € 340**



**Family Twin Suite Deluxe**

South view, 90 m<sup>2</sup>, 2<sup>nd</sup> floor. 2 separate bedrooms with oversized beds (200 x 210 cm) and Schramm mattresses. Winter garden living room with chaise longue and couch as well as a divider that can be opened completely for a spacious living room. Loewe TV, Bose sound system with iPod stinch cable, mini-bar. 2 large, luxurious natural stone bathrooms with bathtubs, showers and view of the mountains.

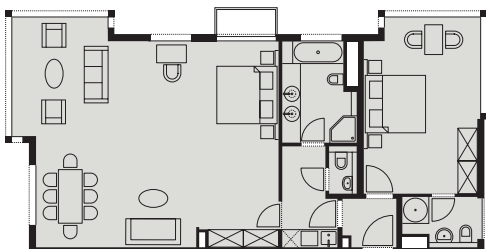
**from € 352**



**Alpspitze Apartment Deluxe**

South, west and north view, 110 m<sup>2</sup>, 2<sup>nd</sup> floor. 2 rooms, one with a large, divisible bedroom with oversized bed (200 x 210 cm) and Schramm mattress and a sofa-bed. Large, divisible winter garden living room with sofa-bed and dining table. Large, separate kitchenette with minibar. Loewe TV, Bose sound system with iPod stinch cable. Bathroom with bathtub, shower, bidet, view of the mountains and second separate toilet. The second room is a double room (bed 200 x 180 cm) with shower, toilet and view of the valley.

**from € 385**

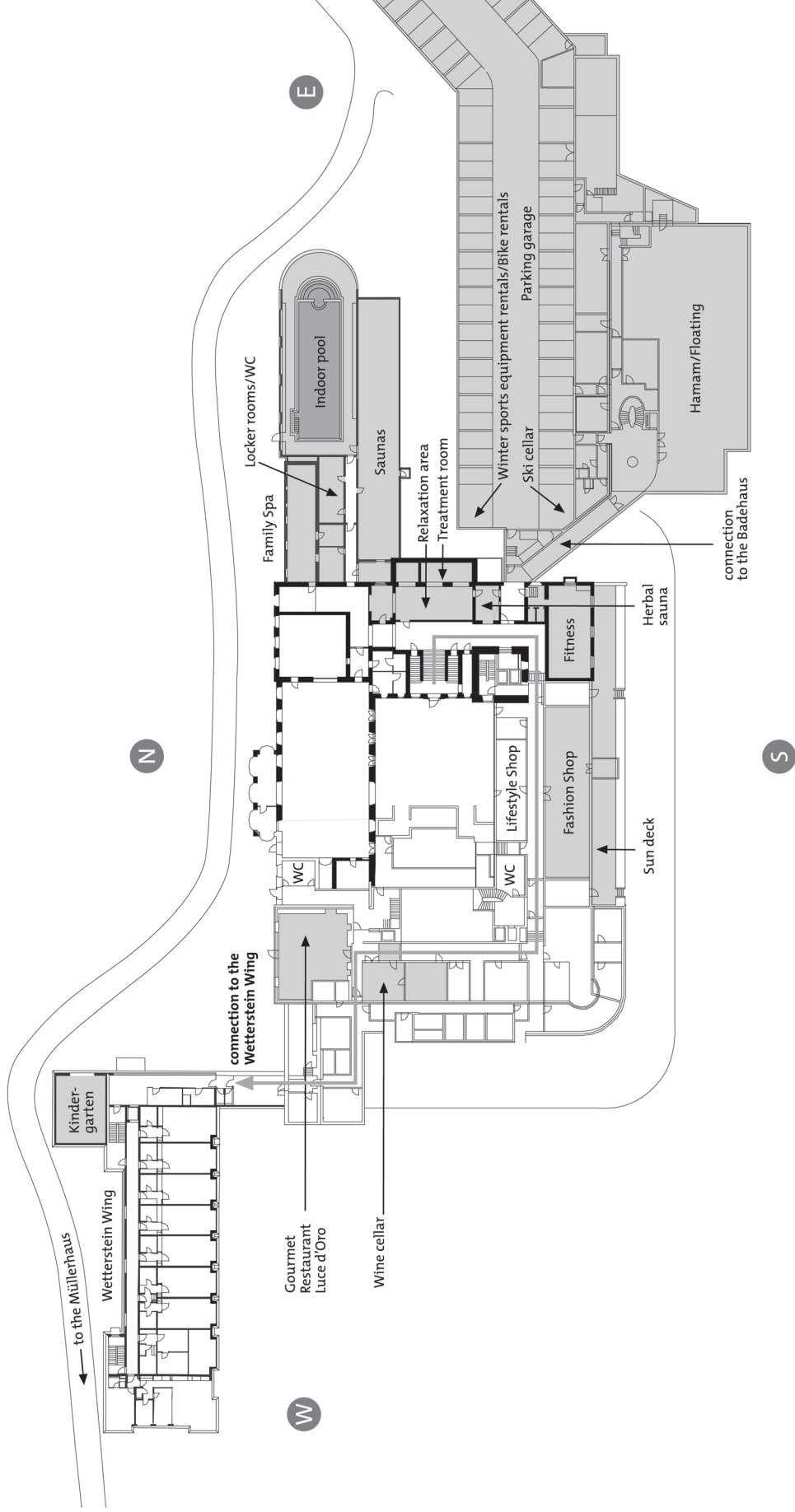


**Zugspitze Suite Deluxe with Balcony**

South, west and north view, 95 m<sup>2</sup>, 3<sup>rd</sup> floor. 2 rooms, one with a large living room/bedroom with oversized bed (200 x 210 cm) and Schramm mattress, 2 sofa-beds and raised level with 2 children's beds. Dining table and separate kitchenette with minibar. Loewe TV, Bose sound system with iPod stinch cable. Luxurious natural stone bathroom with bathtub, shower, view of the mountains and second separate toilet. The second room is a small double room (bed 200 x 180 cm) with shower, toilet and view of the valley.

**from € 395**





**Basement floor SchLOSS and  
 Ground floor Wetterstein Wing**