

THE EVENT EXPERIENCE
EXCLUSIVE MEETINGS, INCENTIVES & EVENTS

SCHLOSS ELMAU
LUXURY SPA RETREAT & CULTURAL HIDEAWAY
★★★★★



THE SCHLOSS ELMAU VALLEY EXPERIENCE

Experience the soothing sounds of silent mountains and rushing streams in the Elmau Valley, an incredibly peaceful sanctuary high in the Bavarian Alps, 100 km south of Munich, 40 km north of Innsbruck and just a short drive from Garmisch-Partenkirchen.

TWO HOTELS. ONE RESORT. LUXURY SPA RETREAT & CULTURAL HIDEAWAY

Indulge in a feeling of peace and belonging in an inimitable Luxury Spa Retreat & Cultural Hideaway featuring two Leading hotels with grand yet intimate interiors connecting subtle oriental influences and timeless Italian elegance with warm lights and precious natural materials from around the world. Guests may use all the great offers of both hotels, except for breakfast at the Retreat, which is reserved for guests of the Retreat. Exclusive booking of both or only one of the two hotels is possible.

SUMMITS & MEETINGS

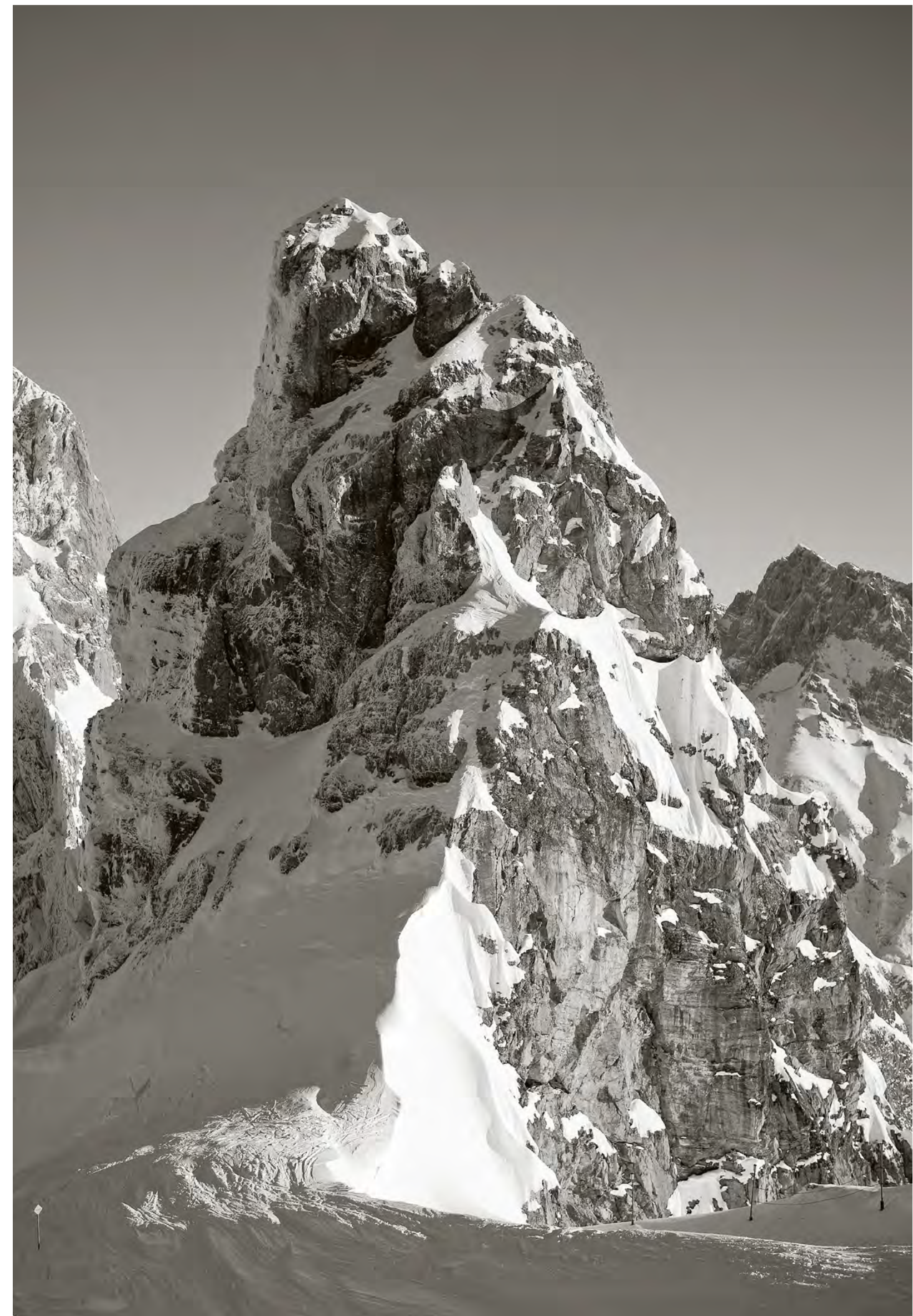
Schloss Elmau is not only an ideal venue for a G7 Summit, but also for exclusive meetings, events, conferences, seminars, weddings, product presentations, car launches and incentives. Both hotels can be booked exclusively for a maximum of 162 rooms and 300 persons.

CONTACT

Barbara Scheler
Director of Rooms & Sales
Barbara.Scheler@schloss-elmau.de

Verena Bendele
Event & Bankett Manager
Verena.Bendele@schloss-elmau.de

Sarah Aurhammer
Assistant Event & Bankett Manager
Event.SchlossElmau@schloss-elmau.de





PUBLISHING CREDITS

Publisher
Schloss Elmau GmbH & Co. KG
In Elmau 2, 82493 Elmau

CEO
Dietmar Mueller-Elmau

Editor-in-Chief & Production
Naomi Jödicke

Photos
Bert Heinzlmeier, Michael Kappeler,
Thomas Straub, Florian Werner,
Will Essig, Fridolin Felix Full,
Guido Bergmann, C. Boehm,
Steffen Kugler, Mario Paecke,
Joss Andres, Christian Kain,
Dietmar Mueller-Elmau, Daniel Breidt,
Amanda Marsalis, Rudolf Balasko/iStock,
Marco Borggreve, Andreas Endemann,
Sammy Hart, Ulrike Myrzik

Design
Anzinger und Rasp
Subject to change.



FACT SHEET

SCHLOSS ELMAU LUXURY SPA RETREAT

Built from 2013 – 2015. Hotel within Hotel.
Residence for the heads of state & government
during the G7 Summit 2015 & 2022.

47 spacious suites & junior suites (180 – 721 sqft).
3 restaurants, library lounge & spa lounge with great terraces.

Shantigiri Spa (2000 sqm) with separate saunas & pools
for adults, ladies and families, Fitness Gym (262 sqft),
Yoga Pavilion (393 sqft).

Concerts & talks with great artists and authors of our time.
The ultimate retreat for exclusive
meetings, incentives, conferences & events
with 10 – 90 people.



SCHLOSS ELMAU LUXURY SPA & CULTURAL HIDEAWAY

Built 1914 – 1916. Destroyed by fire in 2005.
Rebuilt & expanded in 2007.
Host for the G7 Summit 2015 & 2022.

115 rooms & suites (65 – 360 sqft).
6 restaurants, 3 lounges and spectacular terraces.
Elmauer Alm Mountain Restaurant 1200m above sealevel.

3 Spas (16,404 sqft) for adults and families.
Nature Spa at the creek (49,212 sqft).
Jivamukti Yoga Center, Pilates Studio & Fitness Gym.

Great outdoor sports & adventure programs yearround.
Concerts & talks with great artists and authors of our time.

Libraries. Bookstore. Concert Hall.
Fashion & Lifestyle Shops.

Kids Club & Billiard Lounge.
The ultimate hideaway for exclusive
meetings, incentives, conferences and events
with 10 – 210 people.

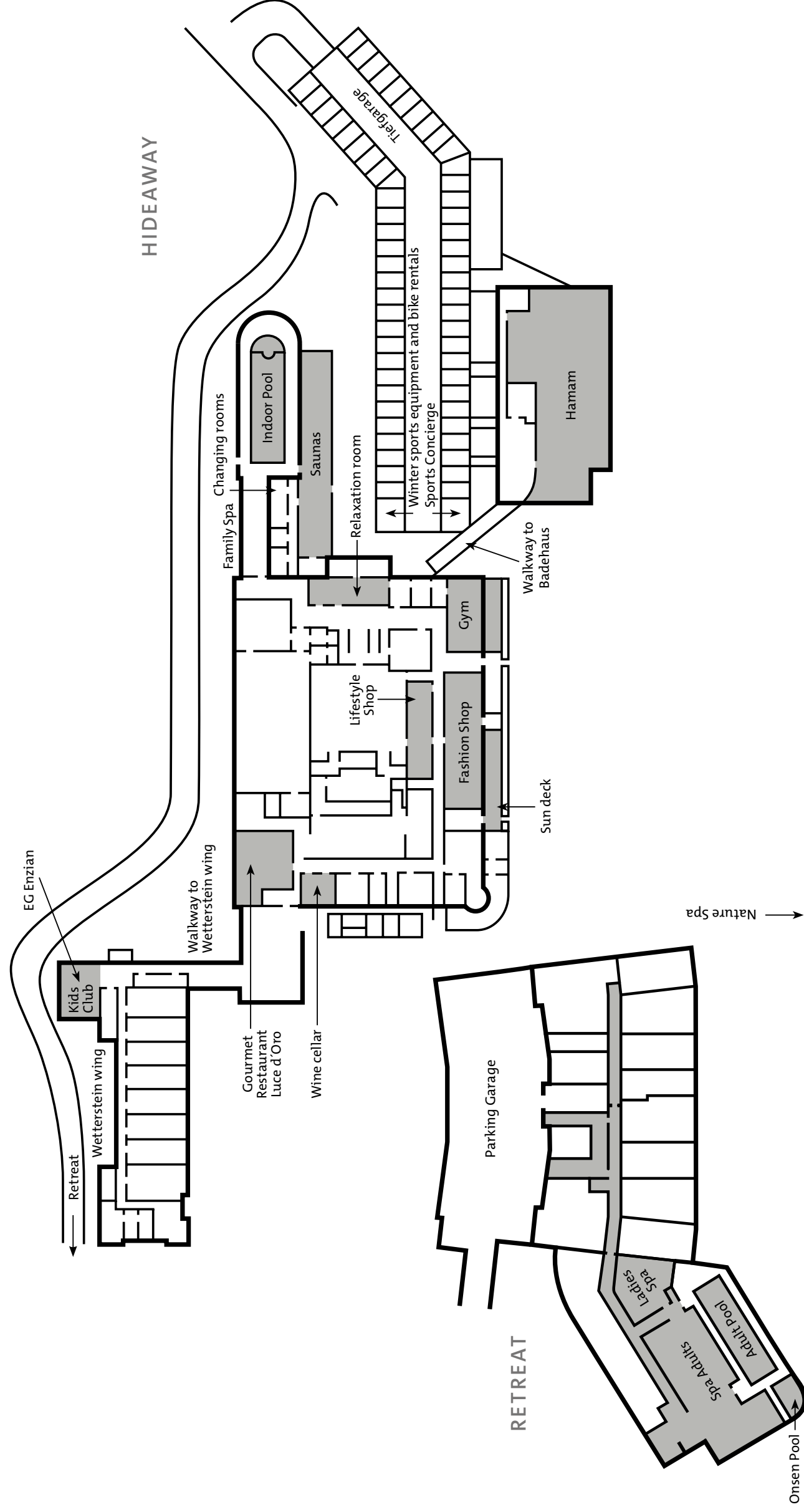


FACILITIES

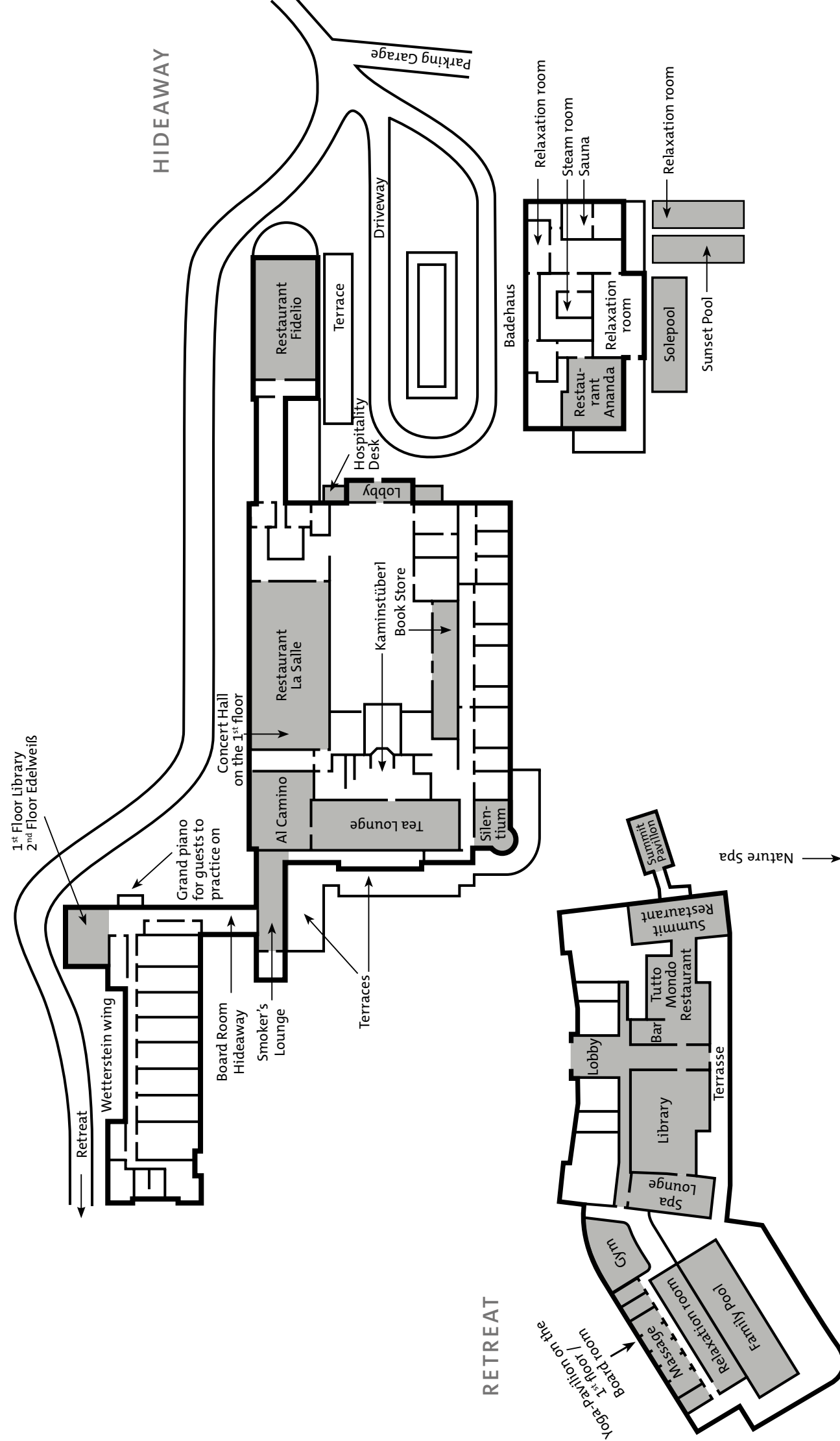
ROOM	BANQUET	THEATER	CLASSROOM	BLOCK	U-SHAPE	LENGHT X WIDTH	HIGHT	SQ FT
CONCERT HALL HIDEAWAY	200	300	120	100	80	98 x 43 FT	21 FT	1,280
CONCERT HALL FOYER	-/-	30	-/-	20	20	29 x 32 M	-/-	295
EDELWEISS HIDEAWAY	-/-	-/-	-/-	10	15	19 x 26 FT	9 FT	157
LIBRARY HIDEAWAY	-/-	40	30	20	25	32 X 22 FT	14 FT	229
SILENTIUM HIDEAWAY	-/-	-/-	-/-	-/-	-/-	278 x 22 FT	-/-	197
ENZIAN HIDEAWAY	-/-	40	30	20	25	32 X 22 FT	15 FT	229
FIDELIO HIDEAWAY	100	150	80	-/-	70	72 X 32 FT	16 FT	656
BOARD ROOM HIDEAWAY	-/-	-/-	-/-	12	-/-	-/-	-/-	65
LUCE D'ORO HIDEAWAY	30	-/-	-/-	-/-	-/-	-/-	-/-	262
LA SALLE HIDEAWAY	180	-/-	-/-	-/-	-/-	-/-	-/-	1,280
KAMINSTÜBERL HIDEAWAY	40	-/-	-/-	-/-	-/-	-/-	-/-	341
ANANDA BADEHAUS	30	-/-	-/-	-/-	-/-	39 x 26 FT	-/-	262
TUTTO MONDO RETREAT	80	-/-	-/-	-/-	-/-	-/-	-/-	574
SUMMIT RETREAT	35	-/-	-/-	-/-	-/-	-/-	-/-	311
SUMMIT PAVILION	32	-/-	-/-	32	20	20 x 40 FT	10 FT	230
PAVILION RETREAT	-/-	120	-/-	-/-	40	65 X 19 FT	9 – 13 FT	394
BOARD ROOM RETREAT	-/-	-/-	-/-	8	-/-	20 x 15 FT	10 FT	98
GANESHA RETREAT	30	-/-	-/-	15	20	36 x 20 FT	-/-	216
ELMAUER ALM	40	-/-	-/-	-/-	-/-	-/-	-/-	-/-

ALL ROOMS SU PPLIED WITH NATURAL LIGHT.

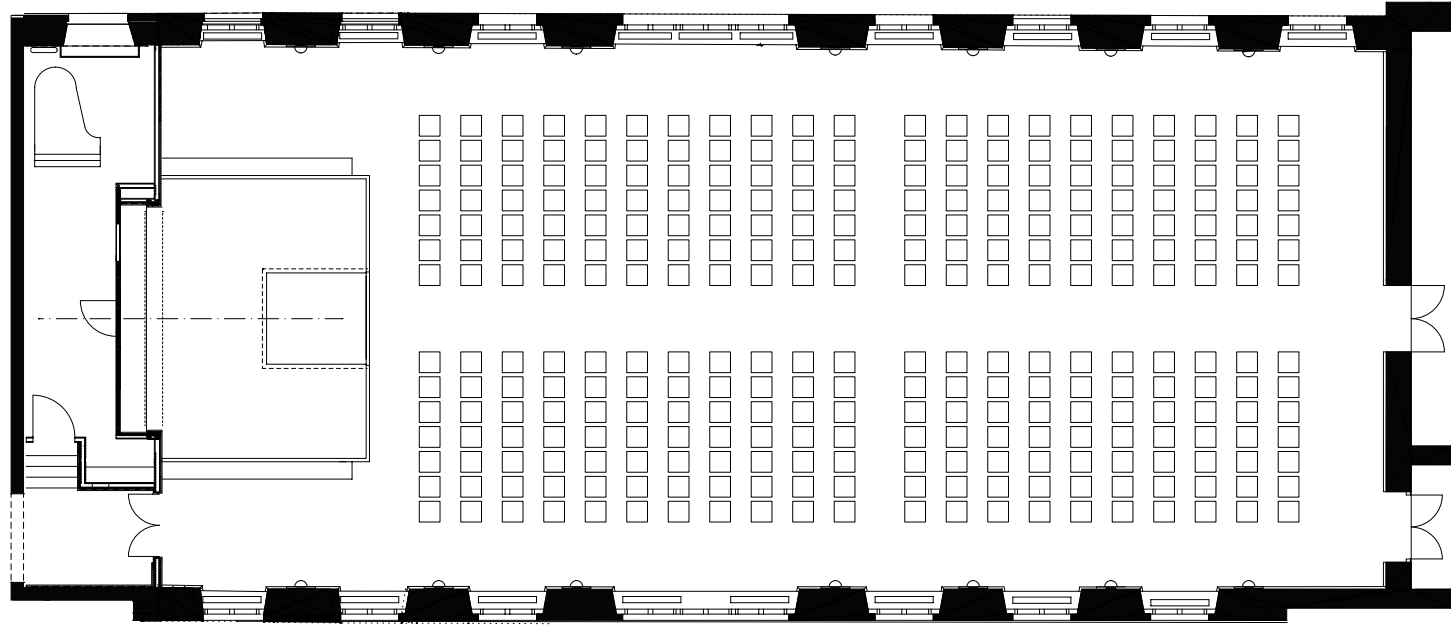
FLOORPLAN
UNDERGROUND FLOOR HIDEAWAY, BADEHAUS
& WETTERSTEIN WING
UNDERGROUND FLOOR RETREAT



FLOORPLAN
GROUND FLOOR HIDEAWAY & BADEHAUS
1ST FLOOR WETTERSTEIN WING
GROUND FLOOR RETREAT



CONCERT HALL
HIDEAWAY



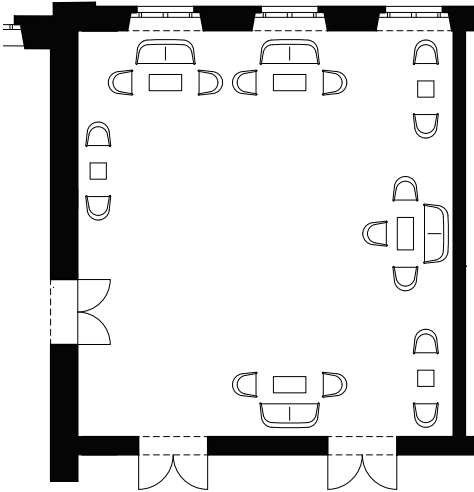
BANQUET 200 PERSONS
THEATER 250 PERSONS
CLASSROOM 120 PERSONS
BLOCK 100 PERSONS
U-SHAPE 80 PERSONS

ROOM SIZE 1280 SQ FT
LOCATION 1ST FLOOR HIDEAWAY





FOYER CONCERT HALL
HIDEAWAY



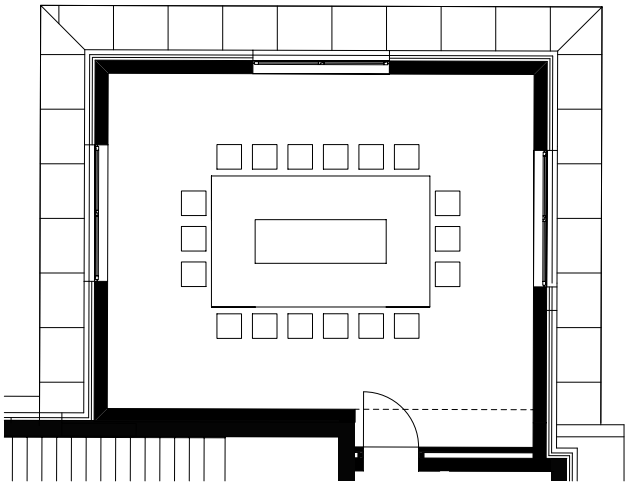
THEATER 30 PERSONS
BLOCK 20 PERSONS
U-SHAPE 20 PERSONS

ROOM SIZE 295 SQ FT
LOCATION 1ST FLOOR HIDEAWAY





EDELWEISS
HIDEAWAY

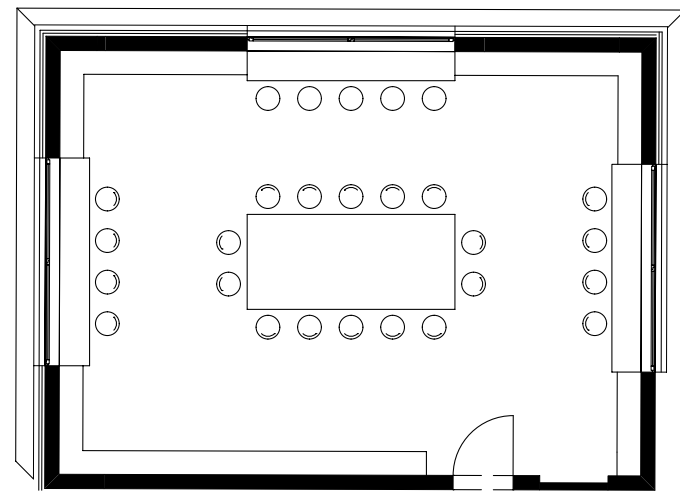


BLOCK 10 PERSONS
U-SHAPE 15 PERSONS

ROOM SIZE 157 SQ FT
LOCATION 3RD FLOOR WETTERSTEIN WING



LIBRARY
HIDEAWAY



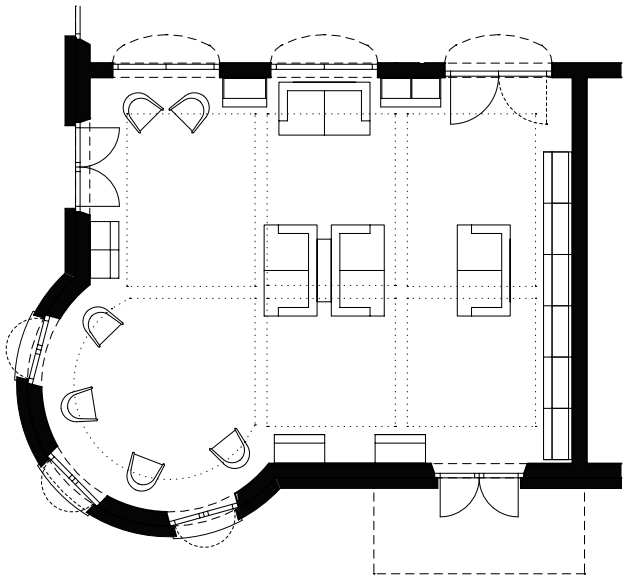
THEATER 40 PERSONS
CLASSROOM 30 PERSONS
BLOCK 20 PERSONS
U-SHAPE 25 PERSONS

ROOM SIZE 229 SQ FT
LOCATION 2ND FLOOR WETTERSTEIN WING





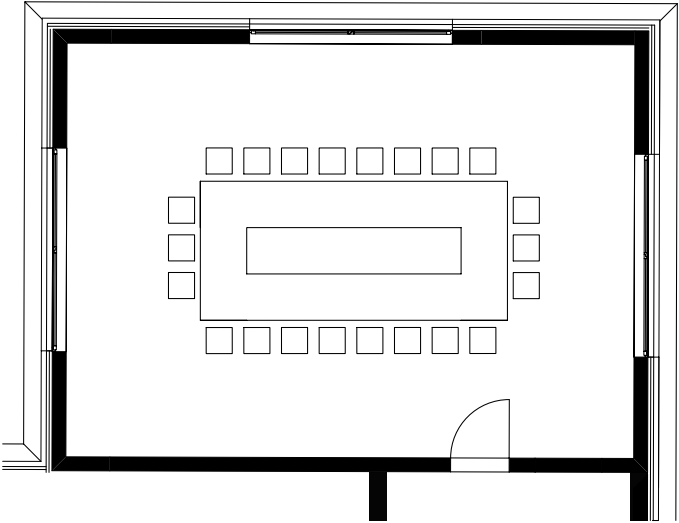
SILENTIUM
HIDEAWAY



ROOM SIZE 197 SQ FT
LOCATION GROUND FLOOR HIDEAWAY



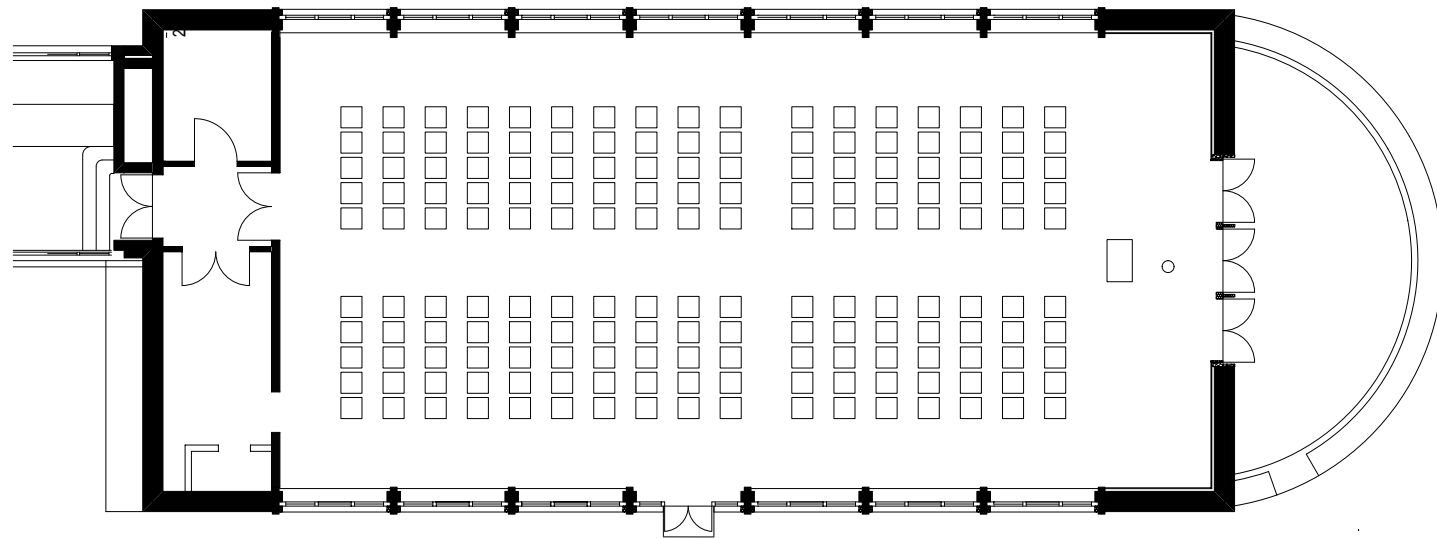
ENZIAN
HIDEAWAY



THEATER 40 PERSONS
CLASSROOM 30 PERSONS
BLOCK 20 PERSONS
U-SHAPE 25 PERSONS

ROOM SIZE 229 SQ FT
LOCATION GROUND FLOOR WETTERSTEIN WING

FIDELIO HIDEAWAY

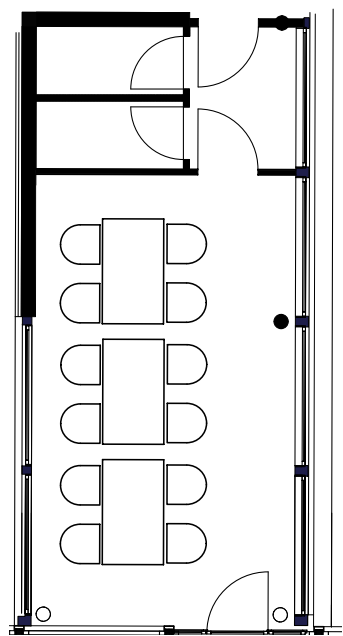


BANQUET 100 PERSONS
THEATER 150 PERSONS
CLASSROOM 80 PERSONS
U-SHAPE 70 PERSONS

ROOM SIZE 656 SQ FT
+ TERRACE
LOCATION GROUND FLOOR HIDEAWAY



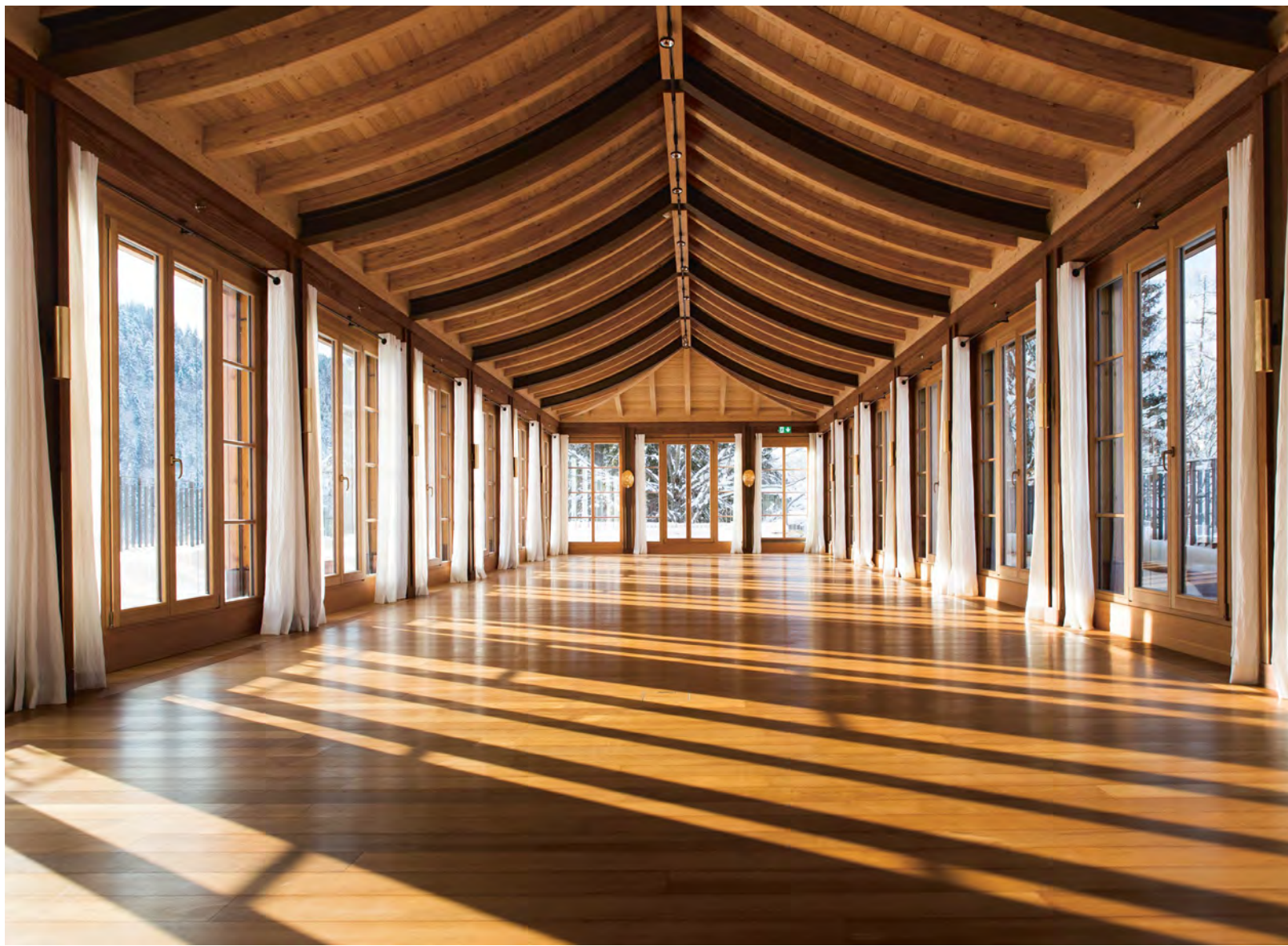
BOARD ROOM
HIDEAWAY



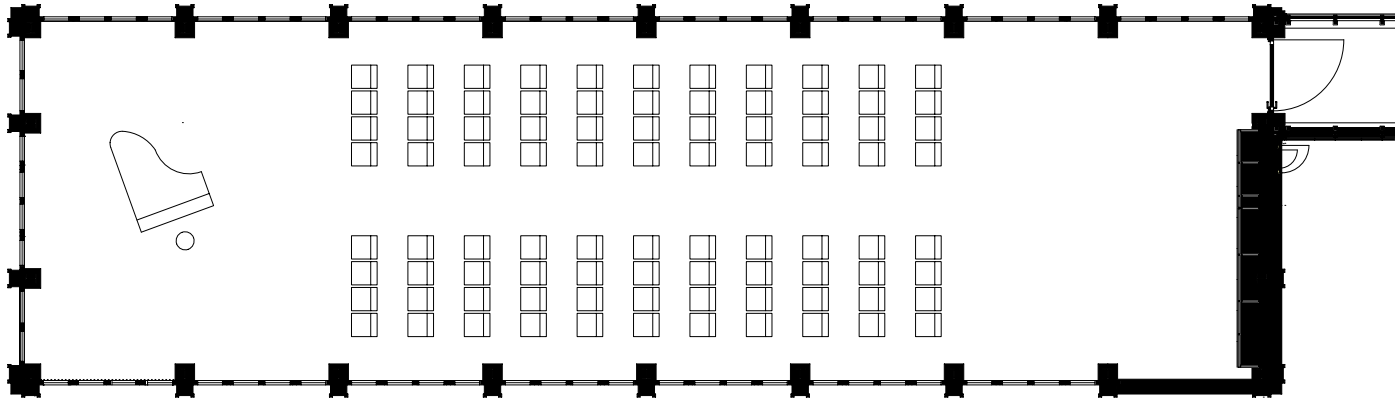
BLOCK 12 PERSONS

ROOM SIZE 65 SQ FT
LOCATION GROUND FLOOR HIDEAWAY





PAVILION
RETREAT

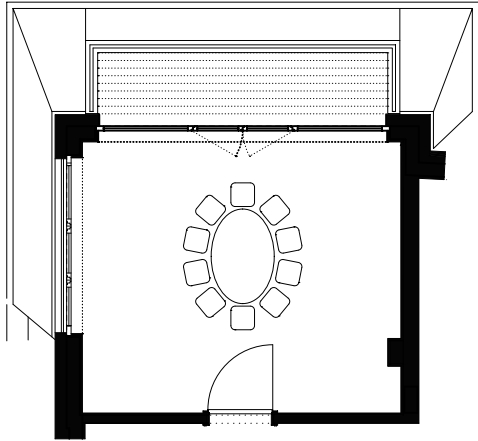


THEATER 120 PERSONS
U-SHAPE 40 PERSONS

ROOM SIZE 394 SQ FT
+ BALKONY
LOCATION 1ST FLOOR RETREAT



BOARD ROOM
RETREAT



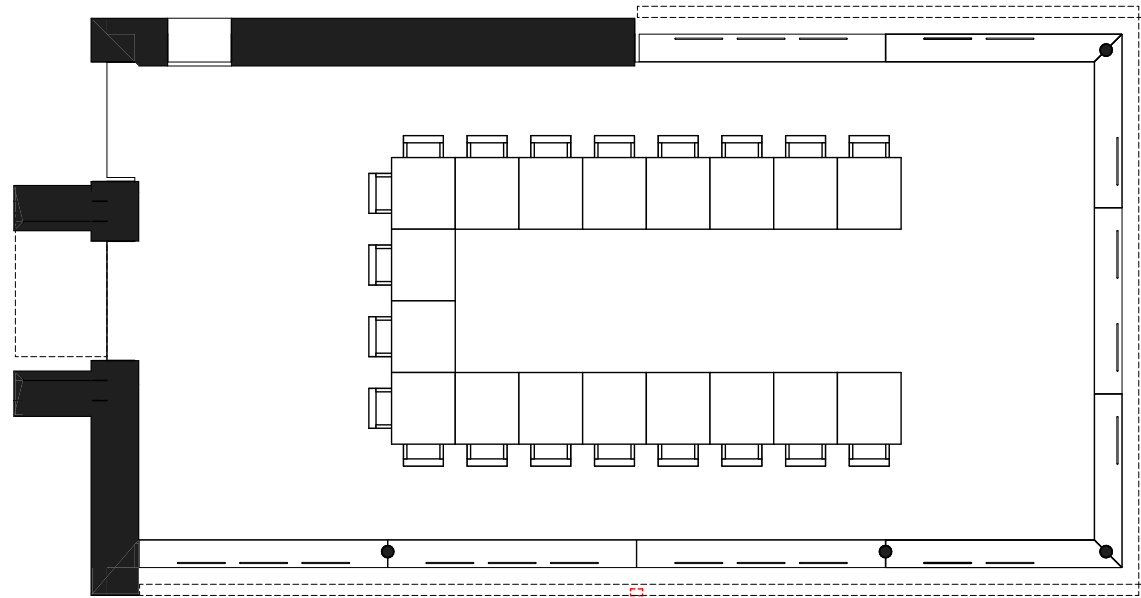
BLOCK 8 PERSONS

ROOM SIZE 98 SQ FT
+ BALCONY

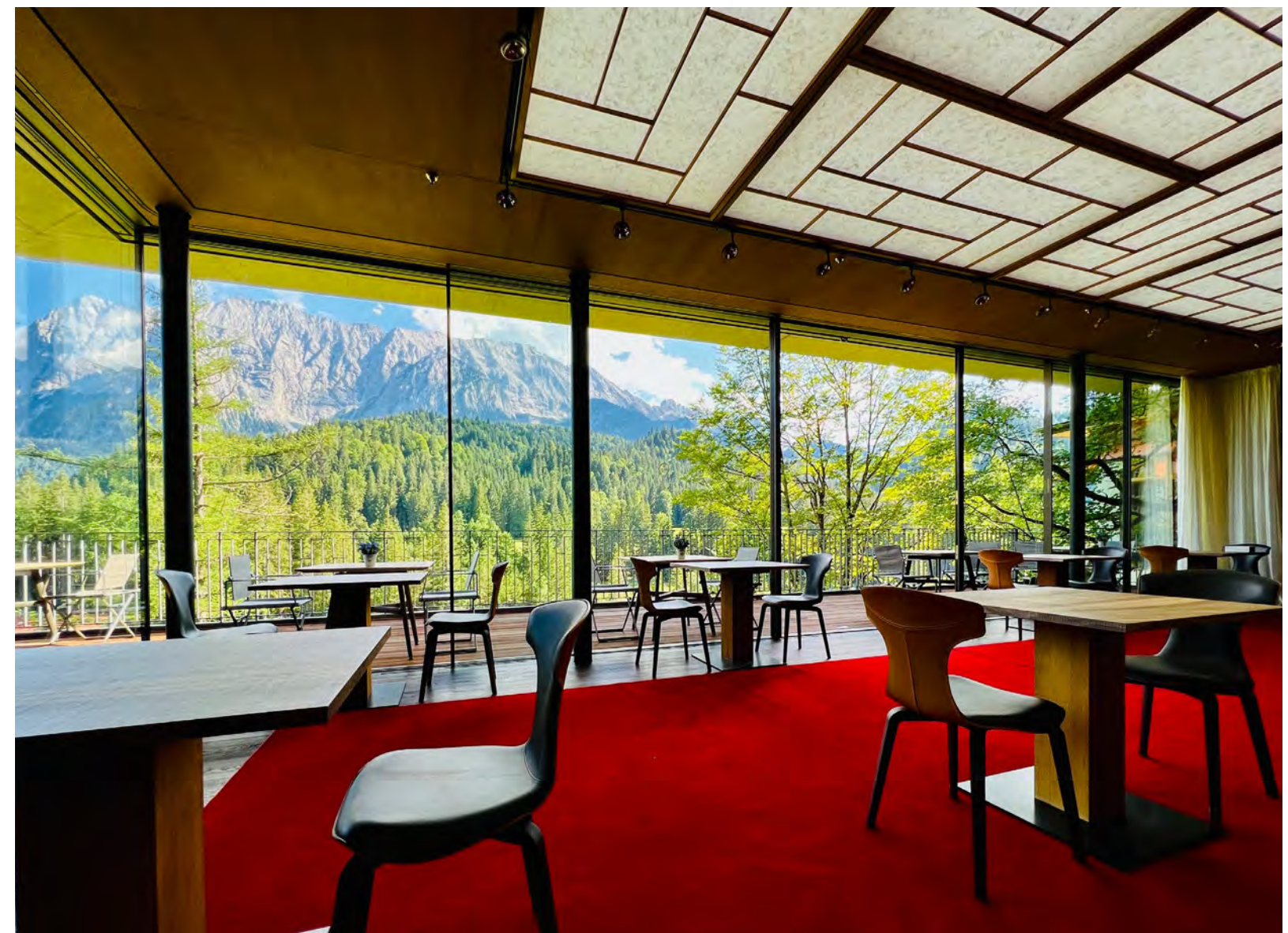
LOCATION 1ST FLOOR RETREAT



SUMMIT PAVILION
RETREAT



BANQUET 32 PERSONS
ROOM SIZE 230 SQ FT
+ TERRACE
LOCATION GROUND FLOOR RETREAT



CULINARY ART
FOR AFFECTIONADOS

LUCE D'ORO / HIDEAWAY
2 STARS GUIDE MICHELIN
5 KOCHMÜTZEN GAULT&MILLAU

FIDELIO / HIDEAWAY
INDIAN HIGH CUISINE

LA SALLE / HIDEAWAY
EUROPEAN & ALPINE HIGH CUISINE

KAMINSTÜBERL / HIDEAWAY
FONDUE RESTAURANT

ANANADA / SCHLOSS
SPA-RESTAURANT & TERRACE

TUTTO MOND, SUMMIT / RETREAT
MEDITERRANEAN HIGH CUISINE

GANESHA / RETREAT
SUSHI & SASHIMI

ELMAUER ALM
RUSTIC CABIN WITH OPEN FIREPLACE
PANORAMIC VIEWS FROM ZUGSPITZE TO KARWENDEL

AL CAMINO BAR / HIDEAWAY

TEA LOUNGE / HIDEAWAY

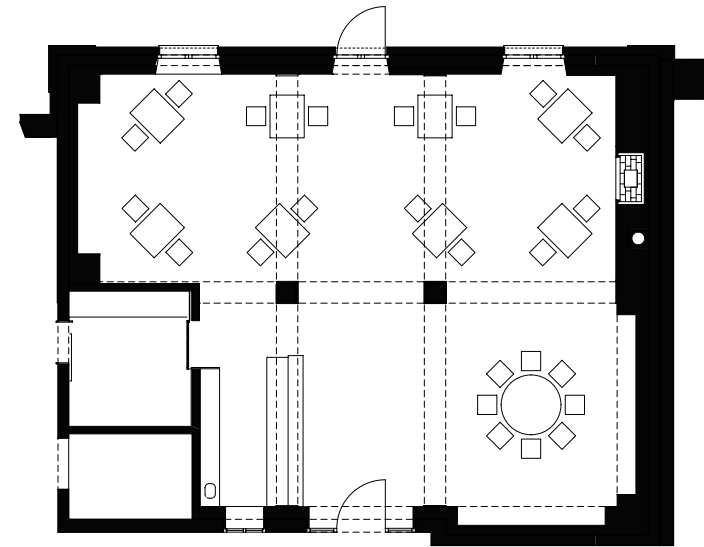
LIBRARY LOUNGE / RETREAT

TERRACE LOUNGE / RETREAT





LUCE D'ORO RESTAURANT
HIDEAWAY



BANQUET 30 PERSONS

ROOM SIZE 262 SQ FT
LOCATION UNDERGROUND FLOOR HIDEAWAY

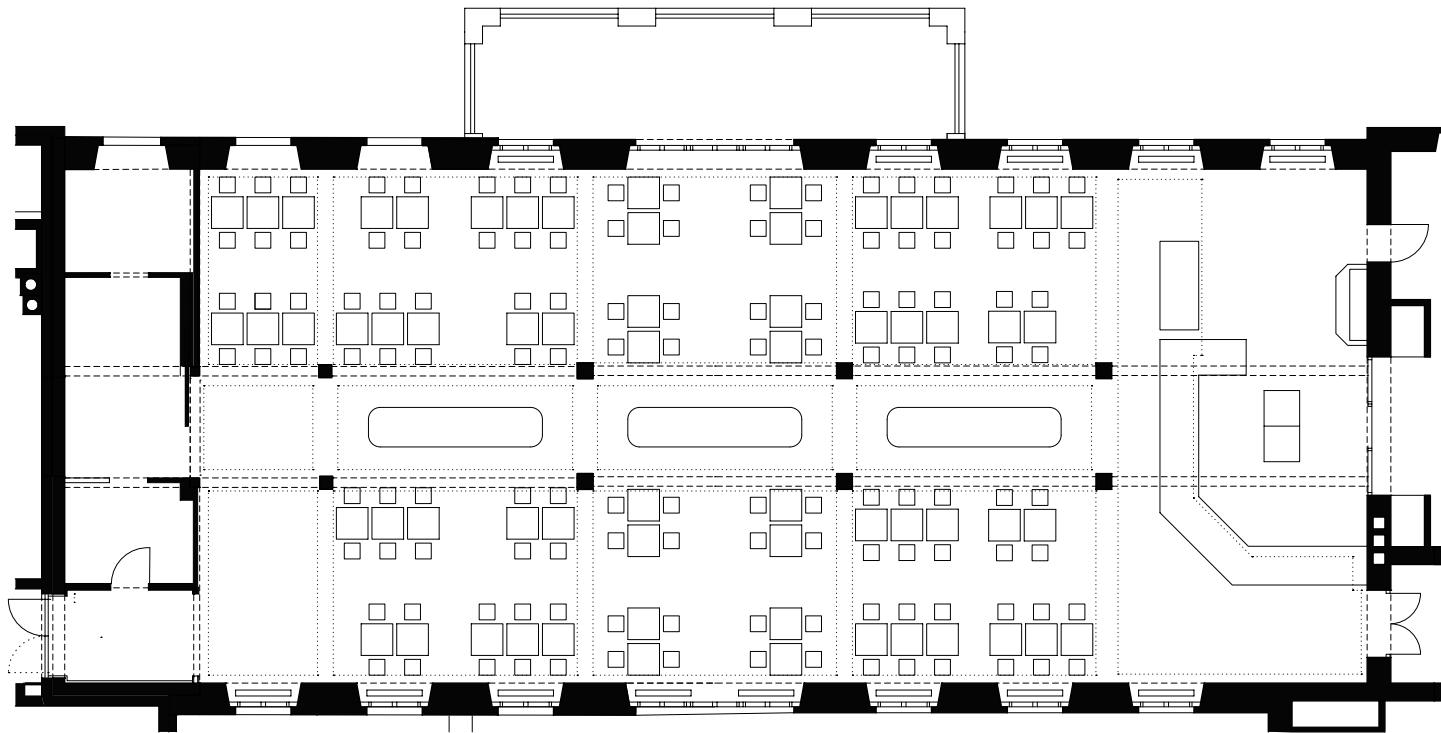


100 PERSONS
ROOM SIZE 656 SQ FT + TERRACE
LOCATION GROUND FLOOR HIDEAWAY

FIDELIO RESTAURANT
HIDEAWAY



LA SALLE RESTAURANT
HIDEAWAY

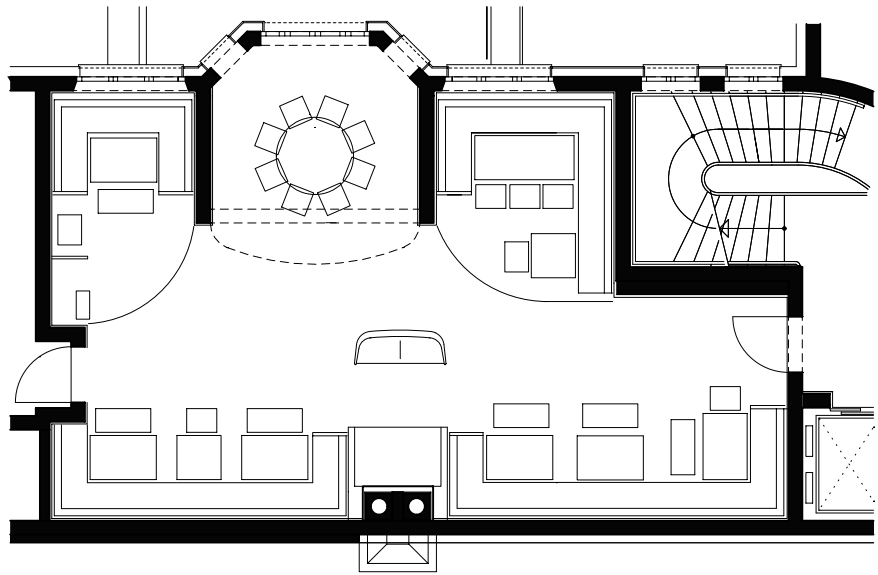


BANQUET 180 PERSONS
ROOM SIZE 1280 SQ FT
+ BALCONY
LOCATION GROUND FLOOR HIDEAWAY





KAMINSTÜBERL FONDUE RESTAURANT
HIDEAWAY



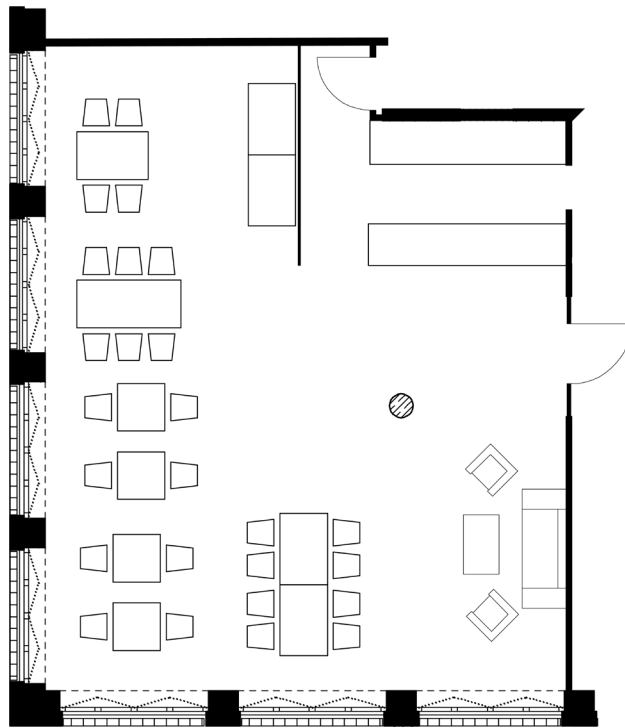
BANQUET 40 PERSONS

ROOM SIZE 341 SQ FT
+ TERRACE

LOCATION GROUND FLOOR HIDEAWAY



ANANDA SPA RESTAURANT
HIDEAWAY

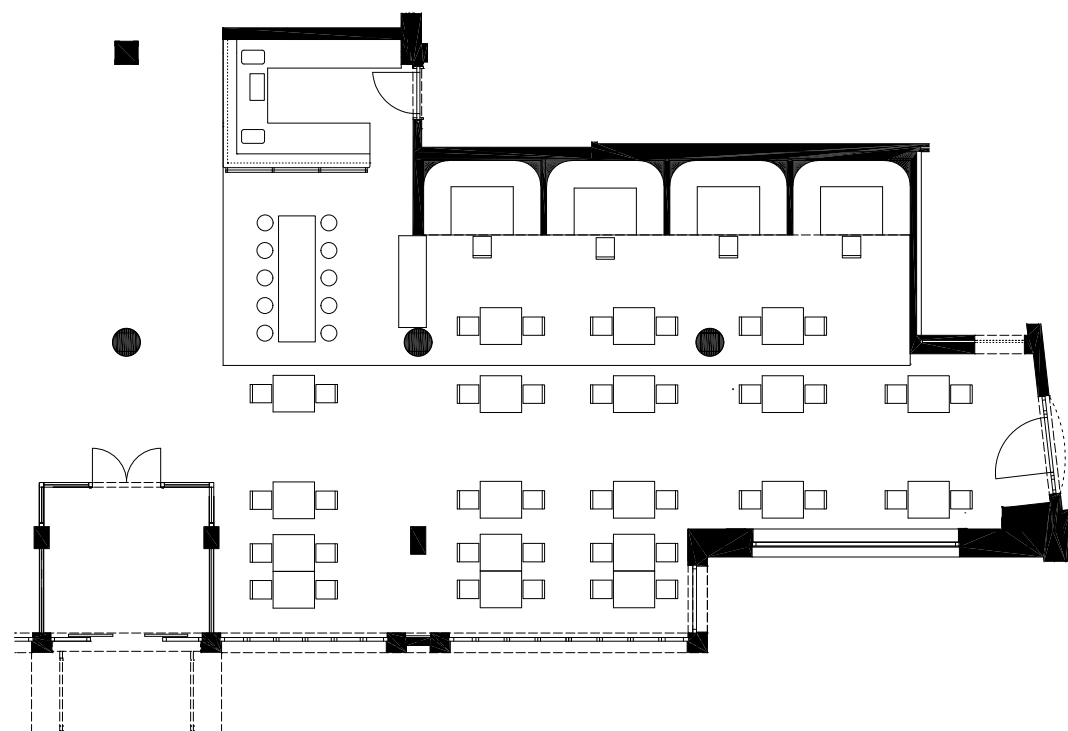


BANQUET 30 PERSONS
ROOM SIZE 262 SQ FT
+ TERRACE
LOCATION GROUND FLOOR BADEHAUS





TUTTO MONDO RESTAURANT
RETREAT

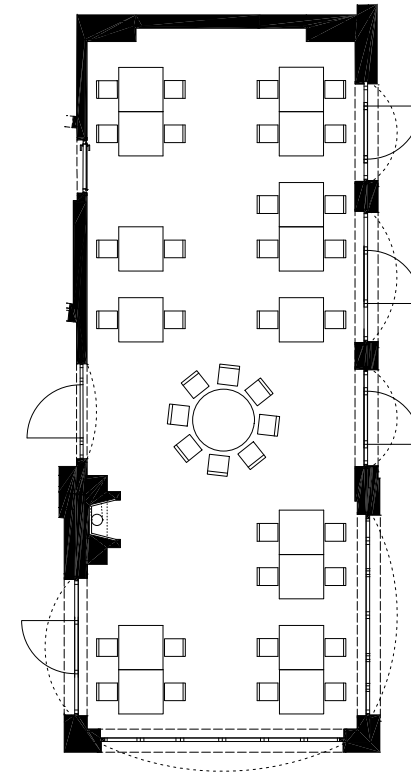


BANQUET 80 PERSONS
ROOM SIZE 574 SQ FT
+ TERRACE
LOCATION GROUND FLOOR RETREAT





SUMMIT RESTAURANT RETREAT

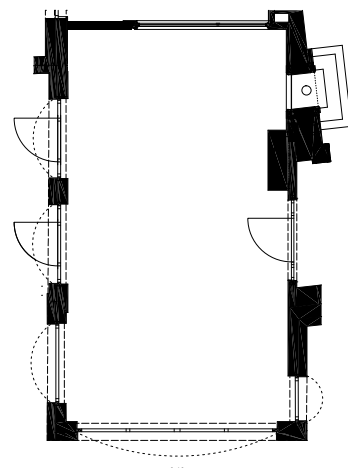


BANQUET 35 PERSONS

ROOM SIZE 311 SQ FT
+ TERRACE
LOCATION GROUND FLOOR RETREAT



GANESHA RESTAURANT
RETREAT



BANQUET 30 PERSONS
BLOCK 15 PERSONS
U-SHAPE 20 PERSONS

ROOM SIZE 216 SQ FT
+ TERRACE
LOCATION GROUND FLOOR RETREAT



**ELMAUER ALM
MOUNTAIN RESTAURANT**

3,937 FT ABOVE SEA LEVEL.
RUSTIC CABIN WITH OPEN FIREPLACE.
PANORAMIC VIEWS FROM ZUGSPITZE
TO KARWENDEL.
AVAILABLE YEARROUND
6:00 PM – MIDNIGHT.
FOR UP TO 30 PERSONS.
EVERYTHING IS POSSIBLE: FROM SET MENU
TO FONDUE TO OYSTER BAR TO SUSHI.

ROOM RENTAL € 850
€ 2.500 FOOD & BEVERAGE MINIMUM

NEW YEAR AND CHRISTMAS ON REQUEST.
BANQUET 40 PERSONS.
+ TERRACE







THE FUTURE OF WELLNESS

There are many ways to suspend time and recharge your batteries. While some can unwind by simply doing nothing, whereas others rather wish to decelerate slowly.

By swimming between heaven and earth in heated outdoor pools; inhaling fresh mountain air; warming up in spacious saunas, steam baths or the largest Oriental Hamam west of Istanbul; cooling off in a crystal-clear mountain stream; resting in luxurious chaise lounges with spectacular views of the beautiful surroundings; being pampered with soothing treatments; practicing Yoga, Pilates or Taijiquan; walking, hiking, mountain-biking or skiing in unspoiled nature – and of course, enjoying immaculate service.

If in addition you want to clear your head, release emotional tensions and stimulate your mind, you will also need free space for imagination, great art, music, literature and poetry.

That is why at Schloss Elmau, we do not only celebrate the ultimate in contemporary wellness culture for adults as well as families, but also – for over a century now – the practice of “mental detox” and mindfulness, with regular concerts and discussions by great artists and writers of our time. They inspire us not only with their profound appreciation for the creative and individual, with their strive for perfection and sense of beauty, their mindfulness and sensitivity, but also with unforgettable moments of time truly suspended. The unique combination of world-class spa and cultural institution of international standing in a Luxury Spa Retreat & Cultural Hideaway offers a transformative experience of intense wellbeing that will linger well long after your departure and kindle a longing to return.



YOGA WITHOUT DOGMA

In the world's only Jivamukti Yoga School outside a major metropolis, we offer our guests a daily yoga program that meets the highest standards. It can be individually adapted while still remaining true to its principles, and communicates the joy of learning. You can come at any time, freed from the pressures of deadlines and schedules. Good yoga is guaranteed.

Practice in the daylightflooded yoga room in the bathhouse, the spectacular yoga pavilion with panoramic views on the rooftop terrace at the Retreat, or on the yoga platform close to nature between the hillocky meadows and the Wetterstein massif.

The Stil: Jivamukti Yoga was developed by Sharon Gannon & David Life in the 1980s in New York, after both had studied with the greatest Indian yogis of the last century.

Teachers: Our ten teachers are all personally certified by Sharon Gannon and David Life in New York, in many cases "advanced certified," have years of teaching experience, "live" yoga and its philosophy daily, and regularly attend advanced training.

Jivamuikti Yoga Center: about 750 classes a year, at least 2 a day:

Basic (60 minutes): ideal for beginners as well as for advanced students who wish to work very precisely and in great detail. During each calendar week, a several-day beginner course is offered and a short home practice developed.

Open (90 minutes): dynamic yoga classes in which all aspects of yoga practice are covered. Due to the dynamic pace of the practice, not every exercise can be explained in detail. Ideal for advanced practitioners or limber beginners. Here, too, meditation and relaxation is an essential part.

As a guest, you can request that individual programs be tailored to your needs and requirements.



SUMMER SPORTS UNLIMITED

Hike to the King Ludwig's mountain lodge,
Königshaus am Schachen,
to Partnachklamm Gorge,
or to Elmauer Alm

Guided mountain tours 2 to 3 times per week

E-mountain biking alone or on guided tours

Archery on the hotel grounds

Climbing in the Wetterstein and Karwendel mountains

Rafting on the Inn

Canyoning in the Karwendel and Wetterstein
mountains

Kayaking on the Loisach

Tennis with or without a coach in the Nature Spa

Golf on the Garmisch-Oberau,
Karwendel, or Seefeld greens

Jogging to Lake Ferchensee

Nordic Walking to Eckbauer

Boccia on the hotel grounds

Horse riding at the Schmalensee stud farm

Fishing & fly fishing

Kitesurfing on nearby Lake Walchensee

WINTER SPORTS UNLIMITED

Ski safaris
cross-country skiing tours,
alone or in groups
off-piste ski tours with a mountain guide
guided snowshoe hikes
freeriding in the Dammkar
dog-sledding tours
horse-drawn sleigh rides
tobogganing, Eistockschießen (curling), and
ice hockey on two courts outside the hotel
Torchlight archery
Horse riding at the Schmalensee stud farm

We will be happy to advise you according to your
individual needs.





100 YEARS OF CONCERTS & TALKS WITH GREAT ARTISTS OF OUR TIME

Schloss Elmau offers a culturally and historically significant cultural program that is unique in the world and featuring the most famous artists of our time. Each year, more than 200 concerts from all genres of music: classical, jazz, pop, swing and world music, as well as readings and film screenings, some of them created especially for Schloss Elmau.

As guests, you can participate in the hotel's free comprehensive cultural offerings free of charge. However, we will also very gladly support you in designing an individual musical context for your family or business celebration.















































